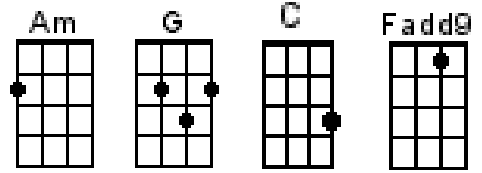


RIPTIDE Vance Joy

INTRO: Am G C (x2)

Am G C C
 ↓↓- ↑↑/↓↓- ↑↑/↓↓- ↑↑/↓↓- ↑↑/

Am G C
 I was scared of dentists and the dark
 Am G C
 I was scared of pretty girls and starting conversations
 Am G C
 Oh all my friends are turning green
 Am G C
 You're the magicians assistant in their dreams



Am G C
 Ah-oooh, ooh ooh
 Am G C (hold)
 Ah-ah, ooh-oooh and they come unstuck

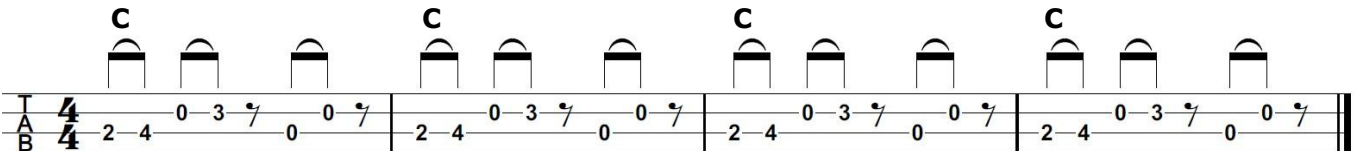
CHORUS:

Am G C
 Lady, running down to the riptide, taken away to the
 Am G C
 Dark side, I wanna be your left hand man
 Am G C
 I love you when you're singing that song and I got a lump in my
 Am G C
 Throat 'cause you're gonna sing the words wrong

Am G C
 There's this movie that I think you'll like
 Am G C
 This guy decides to quit his job and heads to New York City
 Am G C
 This cowboy's running from himself
 Am G C
 And she's been living on the highest shelf

Am G C
 Ah-oooh, ooh ooh
 Am G C (hold)
 Ah-ah, ooh-oooh and they come unstuck

CHORUS



Am G C Fadd9
 I just wanna, I just wanna know, if you're gonna, if you're gonna stay
 Am G C Fadd9 (hold)
 I just gotta, I just gotta know, I can't have it, I can't have it any other way

Am (hold) G (hold) C (hold)
 I swear she's destined for the screen,
 Am (hold) G (hold) C (hold)
 Closest thing to Michelle Pfeiffer that you've ever seen, oh

CHORUS 3 times. Finish with:

C Am G C
 I got a lump in my throat 'cause you're gonna sing the words wrong